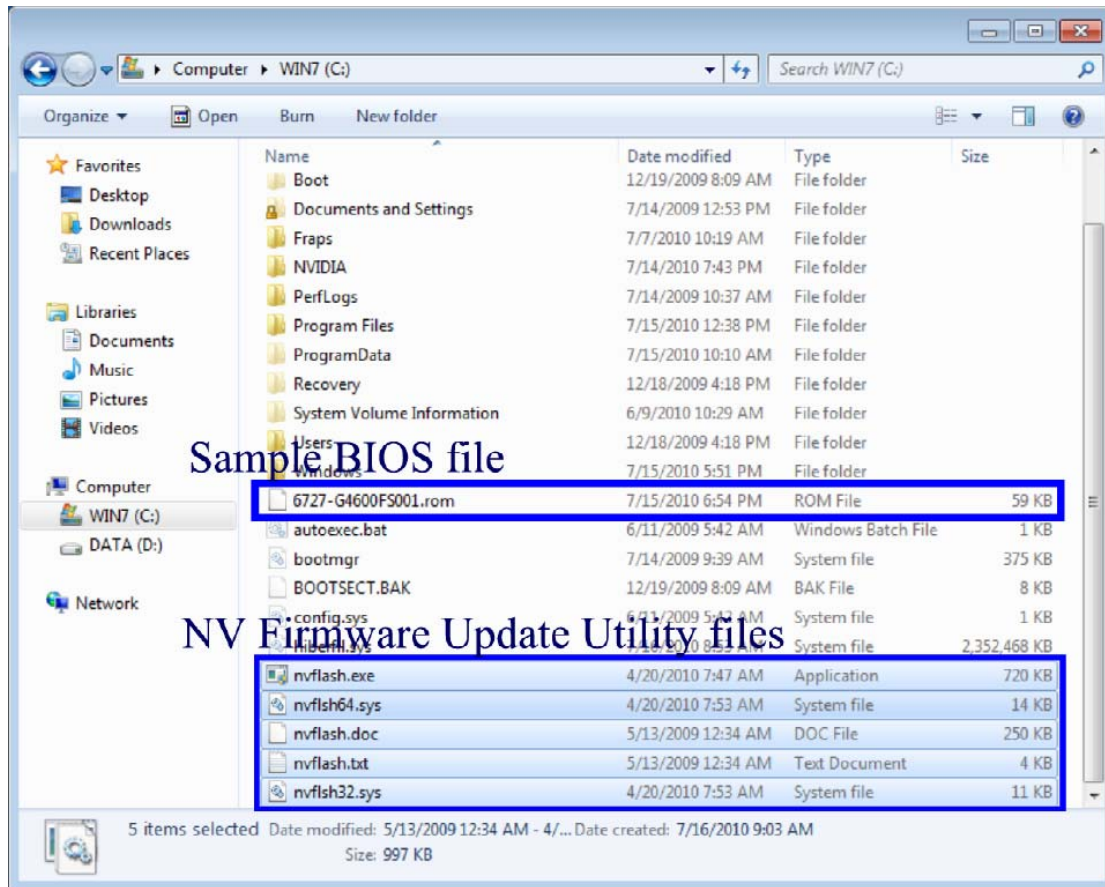
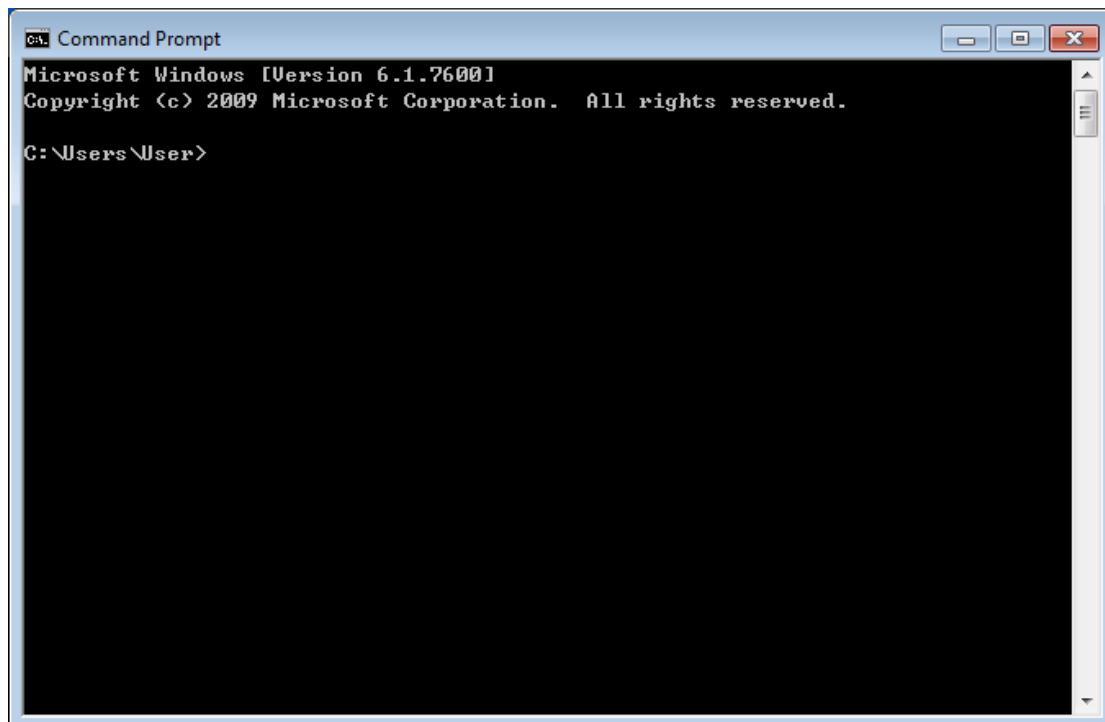


How to update the graphic card BIOS

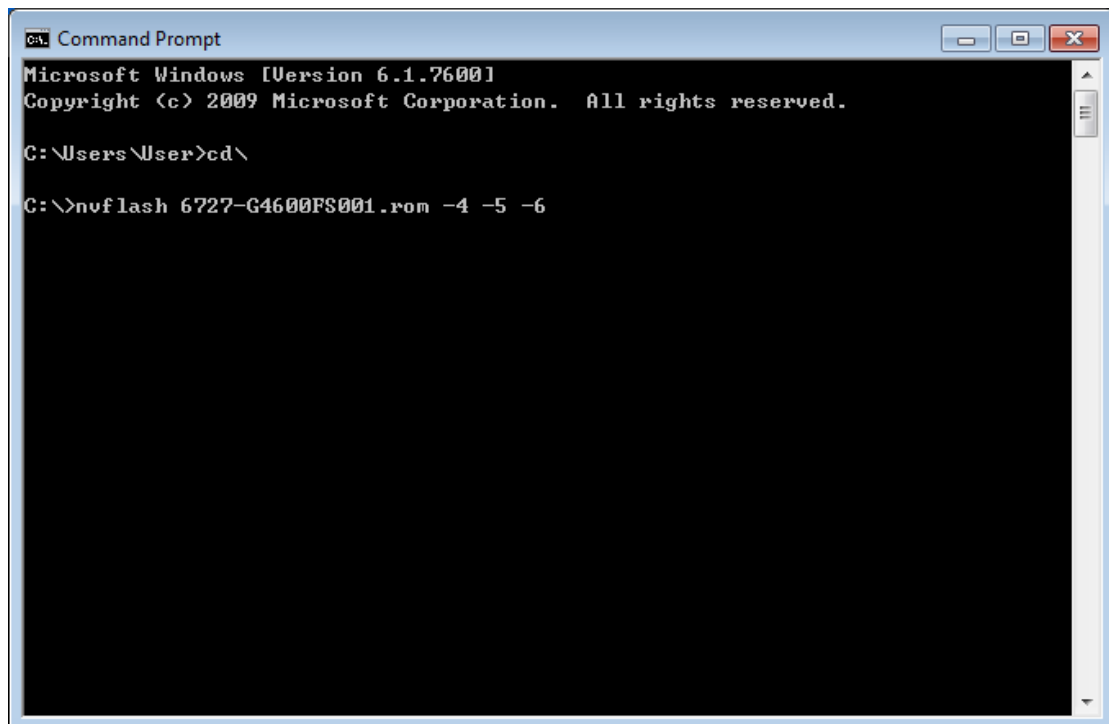
1. Copy Nvidia Firmware Update Utility and BIOS file into C:\



2. Launch Start/All Programs/Accessories/Command Prompt



3. Move to C:\ then input command “**nvflash <filename> -4 -5 -6**” as below sample picture

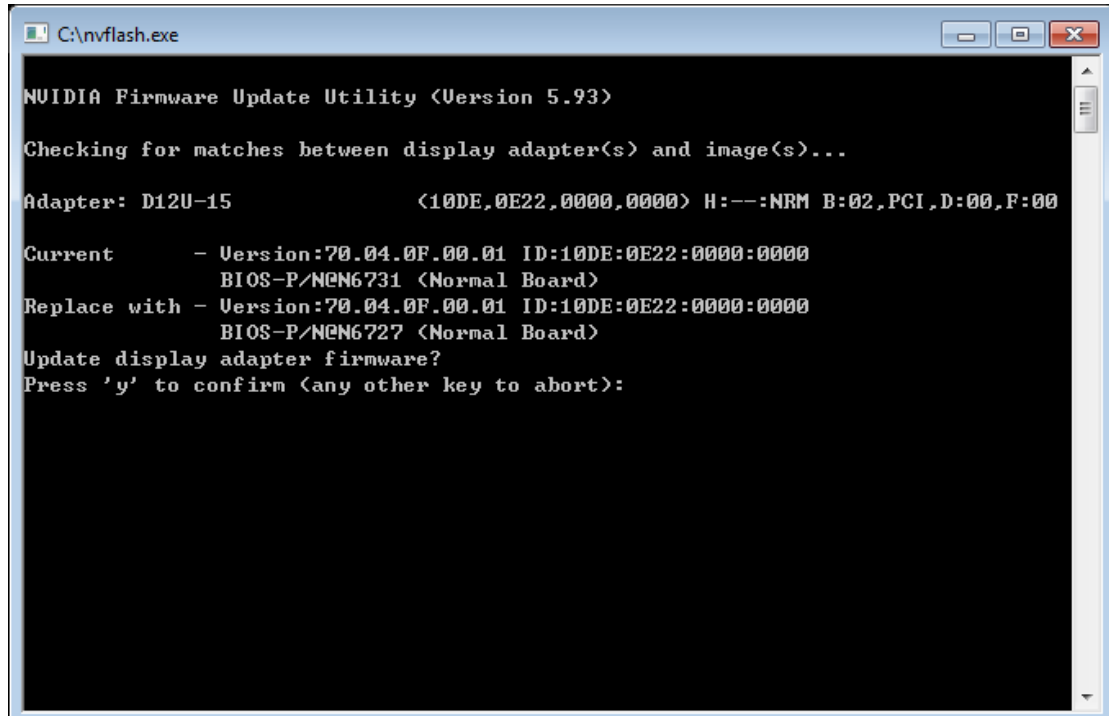


```
Command Prompt
Microsoft Windows [Version 6.1.7600]
Copyright (c) 2009 Microsoft Corporation. All rights reserved.

C:\Users\User>cd\

C:\>nvflash 6727-G4600FS001.rom -4 -5 -6
```

4. Input command “**y**” to confirm



```
C:\nvflash.exe

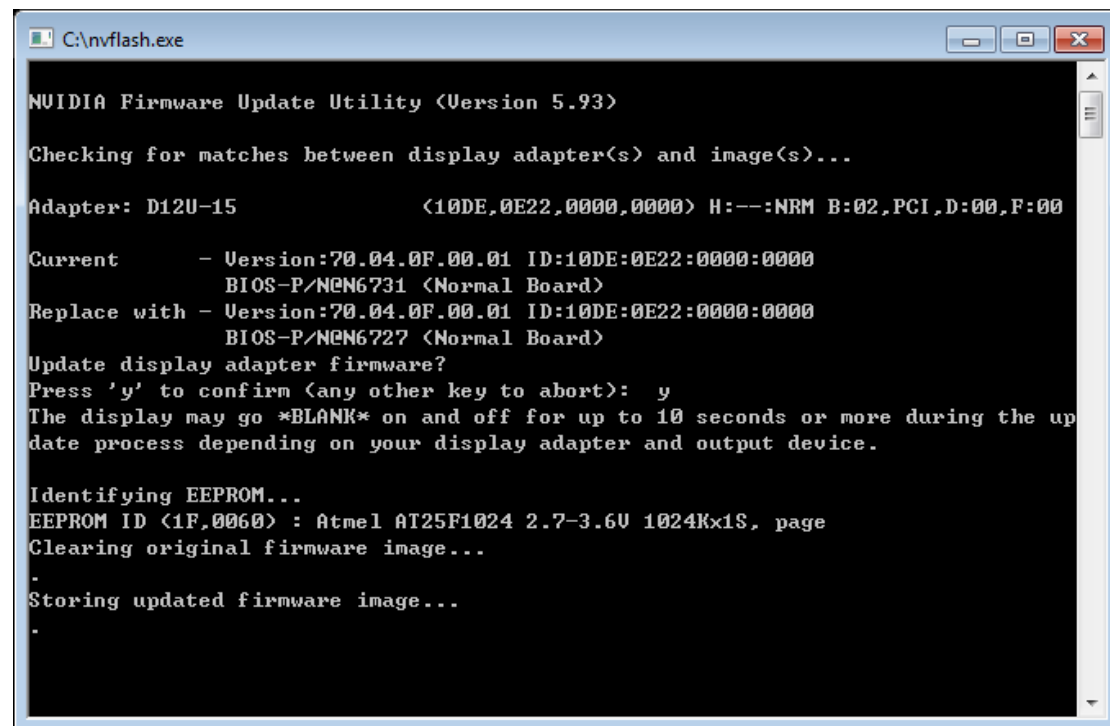
NVIDIA Firmware Update Utility (Version 5.93)

Checking for matches between display adapter(s) and image(s)...

Adapter: D12U-15                (10DE,0E22,0000,0000) H:--:NRM B:02,PCI,D:00,F:00

Current      - Version:70.04.0F.00.01 ID:10DE:0E22:0000:0000
               BIOS-P/N0N6731 (Normal Board)
Replace with - Version:70.04.0F.00.01 ID:10DE:0E22:0000:0000
               BIOS-P/N0N6727 (Normal Board)
Update display adapter firmware?
Press 'y' to confirm (any other key to abort):
```

5. Updating BIOS



```
C:\nvflash.exe

NVIDIA Firmware Update Utility (Version 5.93)

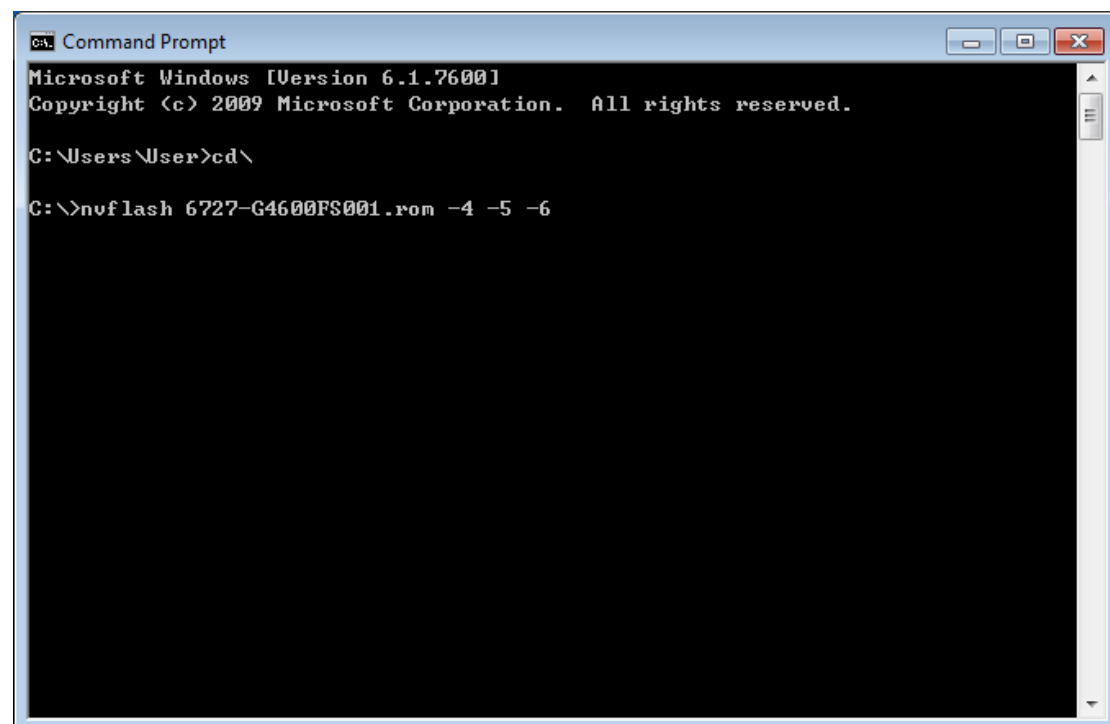
Checking for matches between display adapter(s) and image(s)...

Adapter: D12U-15          (10DE,0E22,0000,0000) H:--:NRM B:02,PCI,D:00,F:00

Current      - Version:70.04.0F.00.01 ID:10DE:0E22:0000:0000
               BIOS-P/NQ6731 (Normal Board)
Replace with - Version:70.04.0F.00.01 ID:10DE:0E22:0000:0000
               BIOS-P/NQ6727 (Normal Board)
Update display adapter firmware?
Press 'y' to confirm (any other key to abort):  y
The display may go *BLANK* on and off for up to 10 seconds or more during the up
date process depending on your display adapter and output device.

Identifying EEPROM...
EEPROM ID (1F,0060) : Atmel AT25F1024 2.7-3.6V 1024Kx1S, page
Clearing original firmware image...
.
Storing updated firmware image...
.
```

6. Back to the Command Prompt window after update



```
Command Prompt

Microsoft Windows [Version 6.1.7600]
Copyright (c) 2009 Microsoft Corporation. All rights reserved.

C:\Users\User>cd\

C:\>nvflash 6727-G4600FS001.rom -4 -5 -6
```

7. Re-boot the system

8. Finish